

PD-1 Recombinant Rabbit Monoclonal Antibody Product Datasheet

Catalog# BX00023

Clone# BP6003

Predicted Molecular Wt: 32kDa
Species Cross-reactivity: Human
Applications: IHC-P

Purity: ProA affinity purified IgG
Form: Liquid
Swissprot ID: Q15116

Background:

Programmed death 1 (PD-1) is a cell surface co-receptor in the CD28/CTLA-4 T-cell family and functions as a down regulator of the immune system through a dual mechanism of inhibition.

PD-1 is expressed on activated T-cells, B-cells, and myeloid cells, and is a marker of angioimmunoblastic lymphoma and suggests a unique cell of origin for this neoplasm.

The presence of PD-1 positive tumor-infiltrating lymphocytes (TIL) has been associated with poor prognosis in human breast cancers and may be useful in antibody therapy targeting the PD-1/PD-L1 signaling pathway. Treatments targeting PD-1 and its ligand, PD-L1, have also shown encouraging results in non-small-cell lung cancer, renal cell carcinoma and melanoma.

Subcellular location:

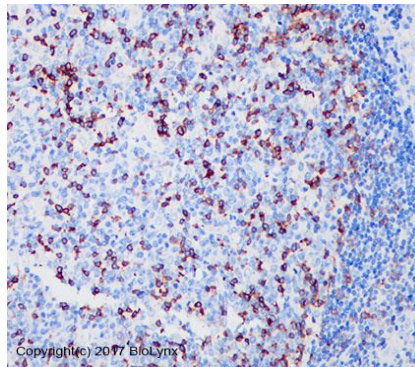
Membrane

Recommended method:

Heat induced epitope retrieval with Tris-EDTA buffer (pH 9.0), primary antibody incubate at RT (18°C-25°C) for 30 minutes.

Immunogen:

Recombinant full length protein corresponding to Human PD-1. The immunogen contains the specific extracellular domain of huPD1 (L25-Q167).



Immunohistochemistry (Formalin/PFA-fixed paraffin-embedded sections) analysis of human tonsil tissue labelling PD-1 with BP6003. Heat mediated antigen retrieval was performed using Tris/EDTA buffer pH 9.0

Storage Buffer:

PBS 59%, Sodium azide 0.01%, Glycerol 40%, BSA 0.05%.

Storage conditions:

-20°C

Storage instructions:

Shipped on blue ice. Upon delivery, aliquot, and store at -20°C. Avoid freeze / thaw cycles.

Recommended Dilutions:

IHC-P: 1:100-1:200

Background References:

1. Iwai Y., Okazaki T., Nishimura H., Kawasaki A., Yagita H., Honjo T. Immunol. Lett. 83:215-220(2002).
2. James E.S., Harney S., Wordsworth B.P., Cookson W.O., Davis S.J., Moffatt M.F. Genes Immun. 6:430-437(2005).

Product QC'd by:



For research use only. Not for use in diagnostic or therapeutic applications.