

Cytokeratin 1 Recombinant Rabbit Monoclonal Antibody Product Datasheet

Catalog# BX50072

Clone# BP6077

Predicted Molecular Wt: 66kDa
Species Cross-reactivity: Human
Applications: IHC-P

Purity: ProA affinity purified IgG
Form: Liquid
Swissprot ID: P04264

Background:

Cytokeratin 1 may regulate the activity of kinases such as PKC and SRC via binding to integrin beta-1 (ITB1) and the receptor of activated protein kinase C (RACK1/GNB2L1).

Defects in Cytokeratin 1 are a cause of bullous congenital ichthyosiform erythroderma (BCIE); also known as epidermolytic hyperkeratosis (EHK) or bullous erythroderma ichthyosiformis congenita of Brocq. BCIE is an autosomal dominant skin disorder characterized by widespread blistering and an ichthyotic erythroderma at birth that persist into adulthood.

Histologically there is a diffuse epidermolytic degeneration in the lower spinous layer of the epidermis. Within a few weeks from birth, erythroderma and blister formation diminish and hyperkeratoses develop.

In diagnostic pathology, immunohistochemical detection of cytokeratin 1 is usually used to label squamous, ductal and complex epithelia combined with other high molecular weight cytokeratins such as cytokeratins 5, 10 and 14. Results aid in the classification of prostatic adenocarcinoma and in the classification of neoplastic tissue as carcinoma of epithelial origin.

Subcellular location:

Plasma membrane, cytoplasm

Recommended method:

Heat induced epitope retrieval with Tris-EDTA buffer (pH 9.0), primary antibody incubate at RT (18°C-25°C) for 30 minutes.

Immunogen:

Synthetic peptide corresponding to residues within aa200-300 of Cytokeratin 1 was used as an immunogen.

Storage Buffer:

PBS 59%, Sodium azide 0.01%, Glycerol 40%, BSA 0.05%.

Storage conditions:

-20°C

Storage instructions:

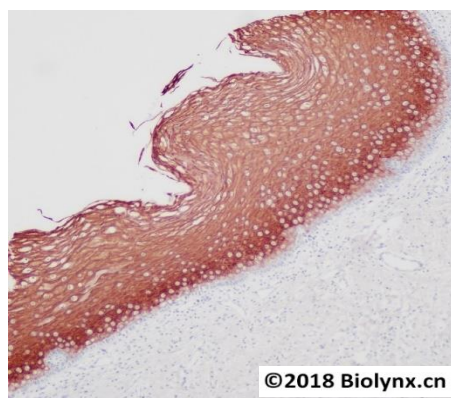
Shipped on blue ice. Upon delivery, aliquot, and store at -20°C. Avoid freeze / thaw cycles.

Recommended Dilutions:

IHC-P: 1:100-1:200

Background References:

1. Schaller G et al. Immunohistochemical detection of keratins 1 and 13 as differentiation markers in the hormone-dependent human vaginal epithelium. *Gynecol Obstet Invest.* 1990;30(2):94-6.
2. Murakami Y, et al. Immunohistochemical interpretation of early epithelial disorders of pyriform sinus. *Ann Otol Rhinol Laryngol.* 1990 Oct;99(10 Pt 1):782-8.



Immunohistochemistry (Formalin/PFA-fixed paraffin-embedded sections) analysis of esophagus tissue labelling Cytokeratin 1 with BP6077. Heat mediated antigen retrieval was performed using Tris/EDTA buffer pH 9.0.

Product QC'd by:



For research use only. Not for use in diagnostic or therapeutic applications.