

CD2 Recombinant Rabbit Monoclonal Antibody Product Datasheet

Catalog# BX50102

Clone# BP6107

Predicted Molecular Wt: 39kDa
Species Cross-reactivity: Human
Applications: IHC-P

Purity: ProA affinity purified IgG
Form: Liquid
Swissprot ID: P06729

Background:

CD2 is mainly present on the surface of mature T cells and NK cell membranes, while B cells are usually not expressed. It can be used to label the diagnosis and study of normal T cells and their associated tumors, such as pre-t cell lymphoma, marginal T cell lymphoma and anaplastic cell lymphoma.

CD2 antibody is useful for identification of precursor and mature T-cell lymphomas. Aberrant loss of CD2 in T-cell lymphomas may help to distinguish them from reactive T-cell proliferations.

Subcellular location:

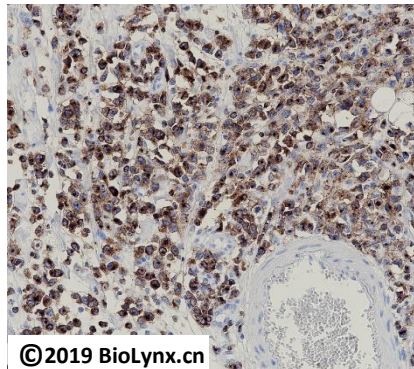
Membrane

Recommended method:

Heat induced epitope retrieval with Tris-EDTA buffer (pH 9.0), primary antibody incubate at RT (18°C-25°C) for 30 minutes.

Immunogen:

Synthetic peptide corresponding to residues within N-Term of CD2 was used as an immunogen.



©2019 Biolynx.cn

Immunohistochemistry (Formalin/PFA-fixed paraffin-embedded sections analysis of T cell lymphoma tissue labelling CD2 with BP6107. Heat mediated antigen retrieval was performed using Tris/EDTA buffer pH 9.0

Storage Buffer:

PBS 59%, Sodium azide 0.01%, Glycerol 40%, BSA 0.05%.

Storage conditions:

-20°C

Storage instructions:


Shipped on blue ice. Upon delivery, aliquot, and store at -20°C. Avoid freeze / thaw cycles.

Recommended Dilutions:

IHC-P: 1:100-1:200

Background References:

1. Companioni Nápoles O, et al. J Gastroenterol 52:39-49 (2017).
2. DE Sanctis V, Belgioia L, et al. ANTICANCER RESEARCH 39: 1935-1942 (2019).

Product QC'd by: 

For research use only. Not for use in diagnostic or therapeutic applications.