

Human Placental Lactogen Recombinant Rabbit Monoclonal Antibody Product Datasheet

Catalog# BX50109

Clone# BP6114

Predicted Molecular Wt: 25kDa
Species Cross-reactivity: Human
Applications: IHC-P

Purity: ProA affinity purified IgG
Form: Liquid
Swissprot ID: PODML2

Background:

Human placental lactogen (also called CSH1 or HPL), is a member of the human growth hormone (hGH)/human placental lactogen gene family. It is important in the regulation of maternal and fetal metabolism, as well as the growth and development of the fetus.

Antibody to HPL reacts with syncytiotrophoblastic cells in choriocarcinoma and intermediate trophoblasts in trophoblastic tumors. It is a useful marker for tumors with trophoblast differentiation.

Subcellular location:

Cytoplasm

Recommended method:

Heat induced epitope retrieval with Tris-EDTA buffer (pH 9.0), primary antibody incubate at RT (18°C-25°C) for 30 minutes.

Immunogen:

Synthetic peptide corresponding to residues within aa100-200 of Human Placental Lactogen was used as an immunogen.

Storage Buffer:

PBS 59%, Sodium azide 0.01%, Glycerol 40%, BSA 0.05%.

Storage conditions:

-20°C

Storage instructions:

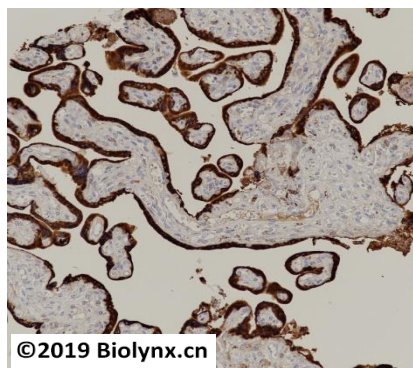
Shipped on blue ice. Upon delivery, aliquot, and store at -20°C. Avoid freeze / thaw cycles.

Recommended Dilutions:


IHC-P: 1:100-1:200

Background References:

- Walsh S.T., Kossiakoff A.A. J. Mol. Biol. 358:773-784(2006).
- Gaudet P., Livstone M.S., Lewis S.E., Thomas P.D. Brief. Bioinformatics 12:449-462(2011).



Immunohistochemistry (Formalin/PFA-fixed paraffin-embedded sections) analysis of placenta labelling Human Placental Lactogen with BP6114. Heat mediated antigen retrieval was performed using Tris/EDTA buffer pH 9.0.

Product QC'd by: 

For research use only. Not for use in diagnostic or therapeutic applications.