

Rev.: 2019-9-18

## CD20 Recombinant Rabbit Monoclonal Antibody Product Datasheet

Catalog# BX50134

Clone# BP6138

**Predicted Molecular Wt:** 33kDa  
**Species Cross-reactivity:** Human  
**Applications:** IHC-P

**Purity:** ProA affinity purified IgG  
**Form:** Liquid  
**Swissprot ID:** P11836

### Background:

CD20 is a membrane-embedded 33kDa nonglycosylated phosphoprotein which play a role in B-cell activation, differentiation, and cell-cycle progression. CD20 is a restricted B-cell antigen and its clinical utility is greatest for identifying B-lineage non-Hodgkin's lymphomas, but it can also aid in the diagnosis of nodular lymphocyte predominance Hodgkin's disease and acute lymphoblastic neoplasms.

### Subcellular location:

Membrane

### Recommended method:

Heat induced epitope retrieval with Tris-EDTA buffer (pH 9.0), primary antibody incubate at RT (18°C-25°C) for 30 minutes.

### Immunogen:

Synthetic peptide corresponding to CD20 residues within aa197-C terminal of CD20 was used as an immunogen.

### Storage Buffer:

PBS 59%, Sodium azide 0.01%, Glycerol 40%, BSA 0.05%.

### Storage conditions:

-20°C

### Storage instructions:

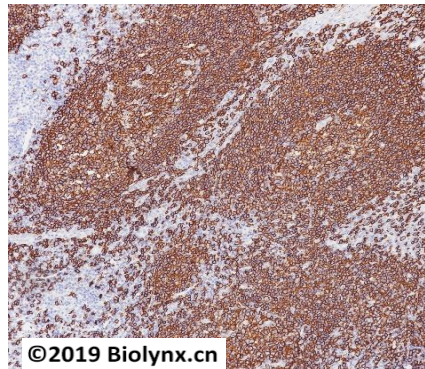
Shipped on blue ice. Upon delivery, aliquot, and store at -20°C. Avoid freeze / thaw cycles.

### Recommended Dilutions:


IHC-P: 1:100-1:200

### Background References:

1. N Johnson., et al. Blood 2009 113:3773-3780.
2. Clark EA., et al. Proc Natl Acad Sci U S A 1985;82:1766-1770.



Immunohistochemistry (Formalin/PFA-fixed paraffin-embedded sections) analysis of Tonsil tissue labelling CD20 with BP6138. Heat mediated antigen retrieval was performed using Tris/EDTA buffer pH 9.0

Product QC'd by: 

For research use only. Not for use in diagnostic or therapeutic applications.