

MCM2 Recombinant Rabbit Monoclonal Antibody Product Datasheet

Catalog# BX50243

Clone# BP6220

Predicted Molecular Wt: 102kDa

Species Cross-reactivity: Human

Applications: IHC-P

Purity: ProA affinity purified IgG

Form: Liquid

Swissprot ID: P49736

Background:

MCM2 acts as component of the MCM2-7 complex, also plays a role in terminally differentiated hair cells development of the cochlea and induces cells apoptosis.

MCM2 express in all proliferative cells.

As a special marker of cell proliferation, It is superior to Ki-67 in precancerous lesions of colon cancer, lung cancer and other epithelial tissues. It is helpful to study malignant mesothelioma and reactive mesothelioma.

Subcellular location:

Nucleus

Recommended Method:

Heat induced epitope retrieval with Tris-EDTA buffer (pH 9.0), primary antibody incubate at RT (18°C-25°C) for 30 minutes.

Immunogen:

Full length protein corresponding to Human MCM2.

Storage Buffer:

PBS 59%, Sodium azide 0.01%, Glycerol 40%, BSA 0.05%.

Storage Conditions:

-25°C to -18°C

Shipment Instructions:

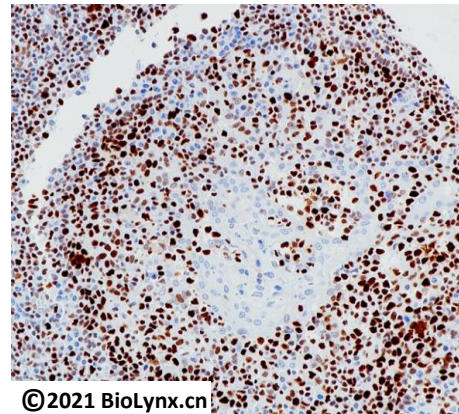
Shipped on blue ice. Upon delivery store at -25°C to -18°C. Avoid freeze / thaw cycles.

Recommended Dilution:

IHC-P: 1:100-1:200

Background References:

1. Todorov I.T., Pepperkok R., Philipova R.N., Kearsey S.E. Cell Sci.107:253-265(1994)
2. Gao J., Wang Q., Dong C., Chen S., Qi Y., Liu Y. PLoS ONE10:E0133522-E0133534(2015)



©2021 BioLynx.cn

Immunohistochemistry (Formalin/PFA-fixed paraffin-embedded sections) analysis of tonsil labelling MCM2 with BP6220.

Product QC'd by:



For research use only. Not for use in diagnostic or therapeutic applications.