

## Cytokeratin Pan Recombinant Rabbit Monoclonal Antibody Product Datasheet

Catalog# BX50143

Clone# BP6051&BP6058

**Predicted Molecular Wt:** 45-66kDa  
**Species Cross-reactivity:** Human  
**Applications:** IHC-P

**Purity:** ProA affinity purified IgG  
**Form:** Liquid  
**Swissprot ID:** P13645/P13647

### Background:

The keratins are the typical intermediate filament proteins of epithelia, showing an outstanding degree of molecular diversity. Heteropolymeric filaments are formed by pairing of type I and type II molecules. In humans 54 functional keratin genes exist. They are expressed in highly specific patterns related to the epithelial type and stage of cellular differentiation.

This cocktail antibody can detect both type I cytokeratins and type II cytokeratin.

### Subcellular location:

Cytoplasm

### Recommended method:

Heat induced epitope retrieval with Tris-EDTA buffer (pH 9.0), primary antibody incubate at RT (18°C-25°C) for 30 minutes.

### Immunogen:

Synthetic peptide corresponding to Type I Cytokeratins residues within aa100-200 of Type I Cytokeratins was used as an immunogen.

Synthetic peptide corresponding to Type II Cytokeratins residues within aa300-400 of Type II Cytokeratins was used as an immunogen.

### Storage Buffer:

PBS 59%, Sodium azide 0.01%, Glycerol 40%, BSA 0.05%.

### Storage conditions:

-25°C to -18°C

### Storage instructions:

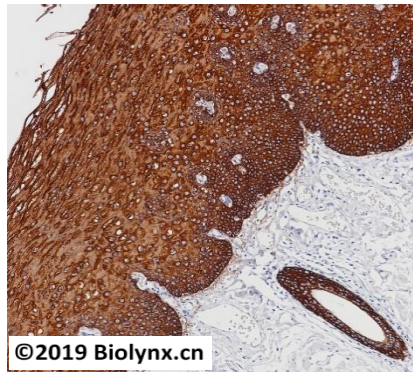
Shipped on blue ice. Upon delivery, aliquot, and store at -25°C to -18°C. Avoid freeze / thaw cycles.

### Recommended Dilutions:

IHC-P: 1:100-1:200

### Background References:

1. Spagnolo DV, et al. Am J Clin Pathol. 1985 Dec;84(6):697-704.
2. Eichner R, et al. J Cell Biol. 1984 Apr;98(4):1388-96.



Immunohistochemistry (Formalin/PFA-fixed paraffin-embedded sections) analysis of esophagus tissue labelling Cytokeratin Pan with BP6051&BP6058. Heat mediated antigen retrieval was performed using Tris/EDTA buffer pH 9.0

Product QC'd by: 

For research use only. Not for use in diagnostic or therapeutic applications.