

Cytokeratin 8 Recombinant Rabbit Monoclonal Antibody Product Datasheet

Catalog# BX50001

Clone# BP6005

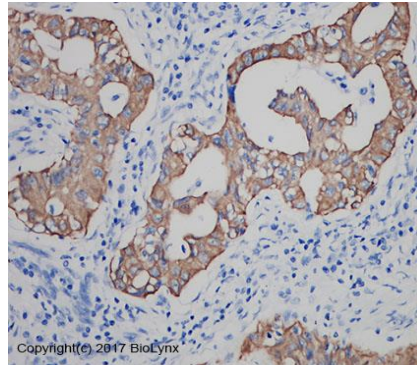
Predicted Molecular Wt: 54kDa
Species Cross-reactivity: Human
Applications: IHC-P

Purity: ProA affinity purified IgG
Form: Liquid
Swissprot ID: P05787

Background:

Cytokeratin 8 (CK8) is a member of the type II intermediate filament (IF) gene family, the majority of the cellular CK8 is assembled with its partner, CK18, into highly insoluble 10 nm filaments that extend from the nucleus to the internal leaflet of the plasma membrane.

CK8 is always expressed by simple epithelial cells and by some carcinoma cells. In non-cancerous tissue, CK8 commonly expressed in normal glandular epithelia, transitional cell epithelium, and hepatocyte. In cancerous tissue, CK8 high expressed in adenocarcinoma, such as human breast or colorectal carcinoma.



Immunohistochemistry (Formalin/PFA-fixed paraffin-embedded sections) analysis of human lung adenocarcinoma tissue labelling CK8 with BP6005. Heat mediated antigen retrieval was performed using Tris/EDTA buffer pH 9.0

Subcellular location:

Cytoplasm

Recommended method:

Heat induced epitope retrieval with Tris-EDTA buffer (pH 9.0), primary antibody incubate at RT (18°C-25°C) for 30 minutes.

Immunogen:

Synthetic peptide corresponding to CK-8 residues within aa383-C terminal of CK-8 was used as an immunogen.

Storage Buffer:

PBS 59%, Sodium azide 0.01%, Glycerol 40%, BSA 0.05%.

Storage conditions:

-20°C

Storage instructions:

Shipped on blue ice. Upon delivery, aliquot, and store at -20°C. Avoid freeze / thaw cycles.

Recommended Dilutions:

IHC-P: 1:100-1:200

Background References:

- Gonias SL, et al. Front Biosci. 2001 Nov 1;6:D1403-11.
- T Makino1, et al. British Journal of Cancer (2009) 101, 1298–1306.

Product QC'd by:



For research use only. Not for use in diagnostic or therapeutic applications.