

Rev.: 2021-4-26

## Somatostatin Recombinant Rabbit Monoclonal Antibody Product Datasheet

Catalog# BX50223

Clone# BP6200

**Predicted Molecular Wt:** 13kDa  
**Species Cross-reactivity:** Human  
**Applications:** IHC-P

**Purity:** ProA affinity purified IgG  
**Form:** Liquid  
**Swissprot ID:** P61278

### Background:

The cyclic tetradecapeptide somatostatin 28 is widely distributed throughout the body and is an important regulator of endocrine and nervous system function. It exerts its biologic actions by binding to specific high affinity receptors on the cell surface.

### Subcellular location:

Cytoplasm

### Recommended method:

Heat induced epitope retrieval with Tris-EDTA buffer (pH 9.0), primary antibody incubate at RT (18°C-25°C) for 30 minutes.

### Immunogen:

Full length protein corresponding to Human Somatostatin.

### Storage Buffer:

PBS 59%, Sodium azide 0.01%, Glycerol 40%, BSA 0.05%.

### Storage conditions:

-25°C to -18°C

### Storage instructions:

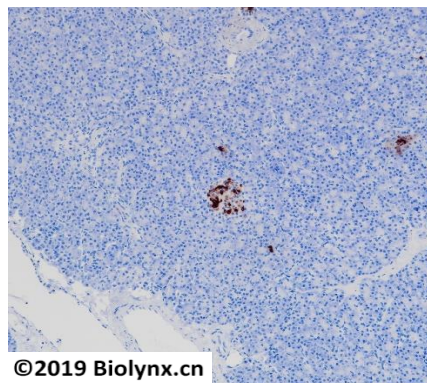
Shipped on blue ice. Upon delivery, aliquot, and store at -25°C to -18°C. Avoid freeze / thaw cycles.

### Recommended Dilutions:

IHC-P: 1:100-1:200

### Background References:

1. Luque R.M., Kineman R.D.J. Endocrinol. 237:217-227(2018)



Immunohistochemistry (Formalin/PFA-fixed paraffin-embedded sections) analysis of Human pancreas tissue labelling Somatostatin with BP6200. Heat mediated antigen retrieval was performed using Tris/EDTA buffer pH 9.0



Product QC'd by:

For research use only. Not for use in diagnostic or therapeutic applications.