

SMAD 4 Recombinant Rabbit Monoclonal Antibody Product Datasheet

Catalog# BX50242

Clone# BP6219

Predicted Molecular Wt: 60kDa
Species Cross-reactivity: Human
Applications: IHC-P

Purity: ProA affinity purified IgG
Form: Liquid
Swissprot ID: Q13485

Background:

SMAD 4 Plays a central role in the balance between atrophy and hypertrophy, also acts synergistically with SMAD1 and YY1 in bone morphogenetic protein (BMP)-mediated cardiac-specific gene expression. It's a component of the heterotrimeric SMAD2/SMAD3-SMAD4 complex that forms in the nucleus and is required for the TGF-mediated signaling and promotes binding of the SMAD2/SMAD4/FAST-1 complex to DNA.

SMAD 4 shows cytoplasmic and nuclear expression in most tissues.

Alterations in the SMAD4 gene was primarily discovered in pancreatic cancer (duct adenocarcinoma) but occur in a variety of cancers such as colorectal cancer, gastric cancer, prostate cancer, melanomas, head and neck cancers and many others. Loss of SMAD4 expression in tumors has also been shown to affect cancer progression and therapy, such as reduced response to adjuvant chemotherapy.

Subcellular location:

Nucleus/Cytoplasm

Recommended Method:

Heat induced epitope retrieval with Tris-EDTA buffer (pH 9.0), primary antibody incubate at RT (18°C-25°C) for 30 minutes.

Immunogen:

Full length protein corresponding to Human SMAD 4.

Storage Buffer:

PBS 59%, Sodium azide 0.01%, Glycerol 40%, BSA 0.05%.

Storage Conditions:

-25°C to -18°C

Shipment Instructions:

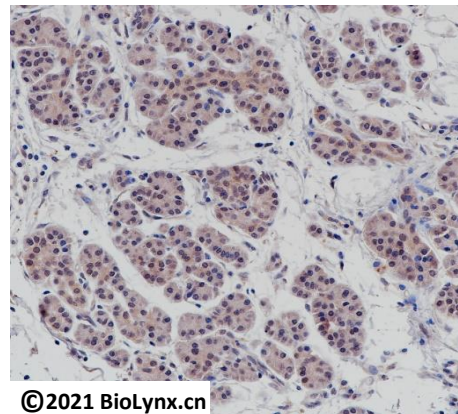
Shipped on blue ice. Upon delivery store at -25°C to -18°C. Avoid freeze / thaw cycles.

Recommended Dilution:

IHC-P: 1:100-1:200

Background References:

1. Liu F., Pouponnot C., Massague J. Genes Dev. 11:3157-3167(1997)
2. Seong H.A., Jung H., Kim K.T., Ha H.J. Biol. Chem. 282:12272-12289(2007)



©2021 Biolynx.cn

Immunohistochemistry analysis of Human pancreatic ductal carcinoma labelling SMAD4 with BP6219.

Product QC'd by:



For research use only. Not for use in diagnostic or therapeutic applications.