

## TLE1 Recombinant Rabbit Monoclonal Antibody Product Datasheet

Catalog# BX50246

Clone# BP6223

**Predicted Molecular Wt:** 83kDa  
**Species Cross-reactivity:** Human  
**Applications:** IHC-P

**Purity:** ProA affinity purified IgG  
**Form:** Liquid  
**Swissprot ID:** Q04724

### Background:

TLE1 binds to a number of transcription factors. It inhibits NF-kappa-B-regulated gene expression, also inhibits the transcriptional activation mediated by FOXA2, and by CTNNB1 and TCF family members in Wnt signaling. It enhances FOXG1/BF-1- and HES1-mediated transcriptional repression.

TLE1 is widely expressed in normal and cancer tissues.

TLE1 is generally use for diagnosis of synovial sarcoma.

### Subcellular location:

Nucleus

### Recommended Method:

Heat induced epitope retrieval with Tris-EDTA buffer (pH 9.0), primary antibody incubate at RT (18°C-25°C) for 30 minutes.

### Immunogen:

Full length protein corresponding to Human TLE1.

### Storage Buffer:

PBS 59%, Sodium azide 0.01%, Glycerol 40%, BSA 0.05%.

### Storage Conditions:

-25°C to -18°C

### Shipment Instructions:

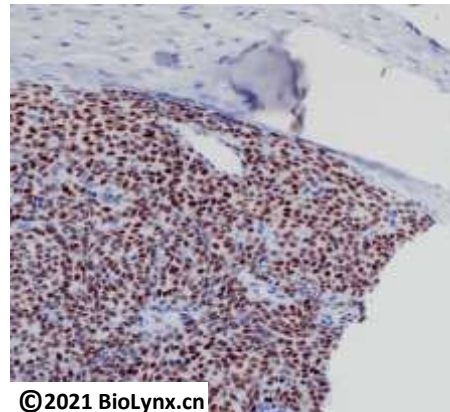
Shipped on blue ice. Upon delivery store at -25°C to -18°C. Avoid freeze / thaw cycles.

### Recommended Dilution:

IHC-P: 1:100-1:200

### Background References:

1. Tetsuka T., Uranishi H., Imai H., Ono T., Sonta S. J. Biol. Chem. 275:4383-4390(2000)



©2021 BioLynx.cn

Immunohistochemistry (Formalin/PFA-fixed paraffin-embedded sections) analysis of synovial sarcoma labelling TLE1 with BP6223.

Product QC'd by:



For research use only. Not for use in diagnostic or therapeutic applications.