

CD1a Recombinant Rabbit Monoclonal Antibody Product Datasheet

Catalog# BX50050

Clone# BP6055

Predicted Molecular Wt: 37kDa
Species Cross-reactivity: Human
Applications: IHC-P

Purity: ProA affinity purified IgG
Form: Liquid
Swissprot ID: P06126

Background:

CD1a is a member of the family group 1 CD1 proteins (CD1a, CD1b, and CD1c), which share the capacity to present microbial lipid antigens to T cells.

CD1a is expressed predominantly on Langerhans cells (LCs), it can be expressed by T-cells under certain conditions. Immature thymocytes express CD1a, as do some T-cells involved in neoplastic conditions such as pre-lymphoblastic lymphomas/leukemias and follicular dendritic cell sarcoma.

CD1a expression on pathogenic Langerhans cells (LCs) in LCH is regarded as a hallmark of this disease and may as a potential target for future therapeutic strategies against inflammatory skin diseases.

Subcellular location:

Membrane

Recommended method:

Heat induced epitope retrieval with Tris-EDTA buffer (pH 9.0), primary antibody incubate at RT (18°C-25°C) for 30 minutes.

Immunogen:

Synthetic peptide corresponding to CD1a residues within aa1-100 of CD1a was used as an immunogen.

Storage Buffer:

PBS 59%, Sodium azide 0.01%, Glycerol 40%, BSA 0.05%.

Storage conditions:

-25°C to -18°C

Storage instructions:

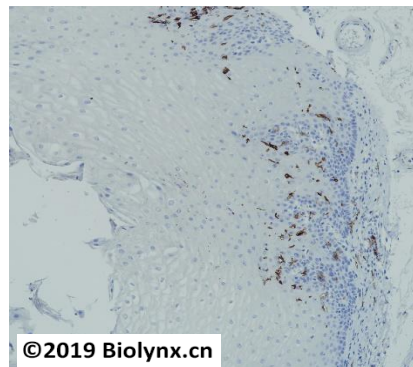
Shipped on blue ice. Upon delivery, aliquot, and store at -25°C to -18°C. Avoid freeze / thaw cycles.

Recommended Dilutions:

IHC-P: 1:100-1:200

Background References:

1. Hunger RE, et.al, J Clin Invest. 2004 Mar;113(5):701-8.
2. Ji Hyung Kim, et.al, Nature Immunology 17 (10) , pp. 1159-1166.



Immunohistochemistry (Formalin/PFA-fixed paraffin-embedded sections analysis of esophagus tissue labelling CD1a with BP6055. Heat mediated antigen retrieval was performed using Tris/EDTA buffer pH 9.0

Product QC'd by:



For research use only. Not for use in diagnostic or therapeutic applications.