

**PD-L1**  
**Recombinant Rabbit Monoclonal Antibody**  
**Product Datasheet**

Catalog# BX50137

Clone# BP6141

**Predicted Molecular Wt:** 33kDa  
**Species Cross-reactivity:** Human  
**Applications:** IHC-P

**Purity:** ProA affinity purified IgG  
**Form:** Liquid  
**Swissprot ID:** Q9NZQ7

**Background:**

Programmed cell death ligand 1 (PD-L1) also known as cluster of differentiation 274 (CD274) or B7 homolog 1 (B7-H1) is a type 1 transmembrane protein involved in the regulation of cellular and humoral immune responses. The interaction of PD-L1 with its receptor PD-1 provides both stimulatory and inhibitory signals in regulating T cell activation and tolerance during pregnancy tissue allografts, autoimmune disease and malignant transformation.

PD-L1 is expressed on resting T cells, B cells, DCs, and macrophages and is further up-regulated upon activation. PD-L1 is also expressed on parenchymal cells, including vascular endothelial cells and pancreatic islet cells. The expression of PD-L1 has been discovered in a variety of epithelial cancers such as non-small cell lung carcinoma (NSCLC), pancreatic cancer, esophageal cancer, squamous cell carcinomas of the head and neck, and renal cell carcinoma (RCC).

The use of IHC for protein identification, along with novel therapies, such as checkpoint inhibitors and vaccines, are generating new options for the treatment of cancer patients.

**Subcellular location:**

Membrane

**Recommended method:**

Heat induced epitope retrieval with Tris-EDTA buffer (pH 9.0), primary antibody incubate at RT (18°C-25°C) for 30 minutes.

**Immunogen:**

Recombinant full length protein corresponding to Human PD-L1 (extracellular). The immunogen contains the specific extracellular domain of huPD-L1 (F19-T239).

**Storage Buffer:**

PBS 59%, Sodium azide 0.01%, Glycerol 40%, BSA 0.05%.

**Storage conditions:**

-25°C to -18°C

**Storage instructions:**

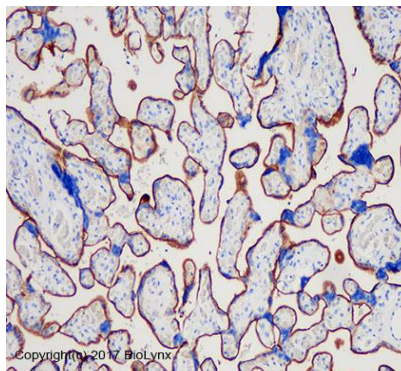
Shipped on blue ice. Upon delivery, aliquot, and store at -25°C to -18°C. Avoid freeze / thaw cycles.

**Recommended Dilutions:**


IHC-P: 1:100-1:200

**Background References:**

- Muenst S1, et al. Breast Cancer Res Treat. 2014 Jul;146(1):15-24.
- Lim SH, et al. Expert Opin Biol Ther. 2016;16(3):397-406.



Immunohistochemistry (Formalin/PFA-fixed paraffin-embedded sections analysis of placenta tissue labelling PD-L1 with BP6001. Heat mediated antigen retrieval was performed using Tris/EDTA buffer pH 9.0

Product QC'd by: 

**For research use only. Not for use in diagnostic or therapeutic applications.**