

## Gastrin Recombinant Rabbit Monoclonal Antibody Product Datasheet

Catalog# BX50276

Clone# BP6253

**Predicted Molecular Wt:** 11kDa  
**Species Cross-reactivity:** Human  
**Applications:** IHC-P

**Purity:** ProA affinity purified IgG  
**Form:** Liquid  
**Swissprot ID:** P01350

### Background:

Gastrin stimulates the stomach mucosa to produce and secrete hydrochloric acid and the pancreas to secrete its digestive enzymes. It also stimulates smooth muscle contraction and increases blood circulation and water secretion in the stomach and intestine.

Gastrin is selectively expressed in a subset of cells in stomach.

Gastrin is used for gastrinoma diagnostic.

### Subcellular location:

Secret

### Recommended Method:

Heat induced epitope retrieval with Tris-EDTA buffer (pH 9.0), primary antibody incubate at RT (18°C-25°C) for 30 minutes.

### Immunogen:

Synthetic peptide. This information is proprietary to Biolynx.

### Storage Buffer:

PBS 59%, Sodium azide 0.01%, Glycerol 40%, BSA 0.05%.

### Storage Conditions:

-25°C to -18°C

### Shipment Instructions:

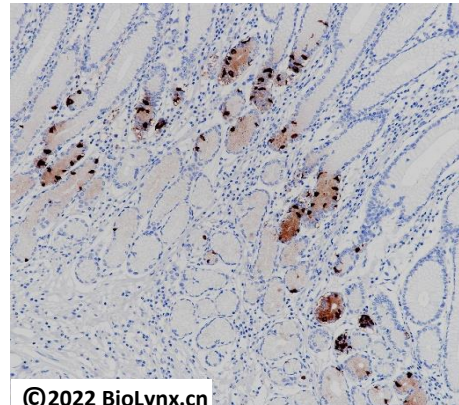
Shipped on blue ice. Upon delivery store at -25°C to -18°C. Avoid freeze / thaw cycles.

### Recommended Dilution:

IHC-P: 1:100-1:200

### Background References:

1. Waldum, H. L., Sagatun, L. (2017). Gastrin and Gastric Cancer. *Frontiers in Endocrinology*, 8.
2. Li, Y. *Journal of Physiology and Biochemistry*, 77(1), 93-104.



Immunohistochemistry (Formalin/PFA-fixed paraffin-embedded sections) analysis of human gastric cancer labelling Gastrin with BP6253.

Product QC'd by: 

For research use only. Not for use in diagnostic or therapeutic applications.