

## PAX-8 Recombinant Rabbit Monoclonal Antibody Product Datasheet

Catalog# BX50179

Clone# BP6157

**Predicted Molecular Wt:** 48kDa  
**Species Cross-reactivity:** Human  
**Applications:** IHC-P

**Purity:** ProA affinity purified IgG  
**Form:** Liquid  
**Swissprot ID:** Q06710

### Background:

PAX-8 is a transcription factor expressed during embryonic development of Müllerian organs, kidney, and thyroid, with continued expression in some epithelial cell types of these mature tissues. It can be useful for marking several types of carcinoma including ovarian serous carcinoma, clear cell renal cell carcinoma, and papillary thyroid carcinoma. Additionally, PAX-8 is not found in the epithelial cells of the breast, lung, mesothelium, stomach, colon, pancreas and other sites.

### Subcellular location:

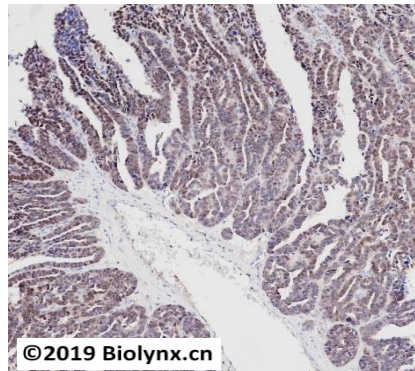
Nucleus

### Recommended method:

Heat induced epitope retrieval with Tris-EDTA buffer (pH 9.0), primary antibody incubate at RT (18°C-25°C) for 30 minutes.

### Immunogen:

Synthetic peptide corresponding to PAX-8 was used as an immunogen. The exact sequence is proprietary.



Immunohistochemistry (Formalin/PFA-fixed paraffin-embedded sections analysis of human Serous cystadenocarcinoma of the ovary tissue labelling PAX-8 with BP6157. Heat mediated antigen retrieval was performed using Tris/EDTA buffer pH 9.0

### Storage Buffer:

PBS 59%, Sodium azide 0.01%, Glycerol 40%, BSA 0.05%.

### Storage conditions:

-25°C to -18°C

### Storage instructions:


Shipped on blue ice. Upon delivery, aliquot, and store at -25°C to -18°C. Avoid freeze / thaw cycles.

### Recommended Dilutions:

IHC-P: 1:100-1:200

### Background References:

1. Hsu CF et al. EBioMedicine 41:597-609 (2019).
2. Drusian L et al. Cell Rep 24:1093-1104.e6 (2018).

Product QC'd by: 

For research use only. Not for use in diagnostic or therapeutic applications.