

SDHB Recombinant Rabbit Monoclonal Antibody Product Datasheet

Catalog# BX50182

Clone# BP6160

Predicted Molecular Wt: 32kDa
Species Cross-reactivity: Human
Applications: IHC-P

Purity: ProA affinity purified IgG
Form: Liquid
Swissprot ID: P21912

Background:

Succinate dehydrogenase B (SDHB) is an iron-sulfur subunit of mitochondrial complex II, a key component of the citric acid cycle and the electron transport chain, a respiratory complex that catalyzes the oxidation of succinate in the mitochondrial membrane. Many cancers are generally positive for SDHB, including renal cell carcinomas and gastrointestinal stromal tumors. A subset of RCC and GIST tumors that are associated with SDH mutations, Carney-Stratakis Syndrome or Carney Triad exhibit a loss of SDHB expression.

Subcellular location:

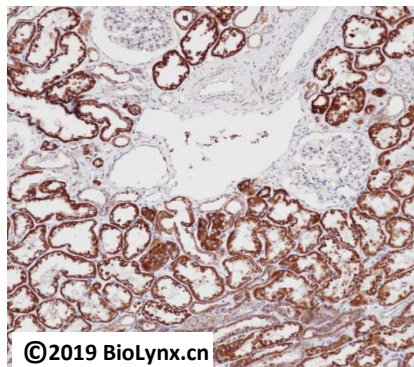
Cytoplasm

Recommended method:

Heat induced epitope retrieval with Tris-EDTA buffer (pH 9.0), primary antibody incubate at RT (18°C-25°C) for 30 minutes.

Immunogen:

Synthetic peptide corresponding to residues in Human SDHB was used as an immunogen.



Immunohistochemistry (Formalin/PFA-fixed paraffin-embedded sections) analysis of human kidney tissue labelling SDHB with BP6160. Heat mediated antigen retrieval was performed using Tris/EDTA buffer pH 9.0

Storage Buffer:

PBS 59%, Sodium azide 0.01%, Glycerol 40%, BSA 0.05%.

Storage conditions:

-25°C to -18°C

Storage instructions:

Shipped on blue ice. Upon delivery, aliquot, and store at -25°C to -18°C. Avoid freeze / thaw cycles.

Recommended Dilutions:

IHC-P: 1:100-1:200

Background References:

1. Chang HC et al. Redox Biol 20:321-333 (2019).
2. Her YF et al. PLoS One 10:e0127471 (2015).

Product QC'd by:



For research use only. Not for use in diagnostic or therapeutic applications.